



CABOT

Computer Solutions Inc.
www.cabotinc.ca

SAW Demo Installation Guide

Rev 3-2-0

Copyright Cabot Computer Solutions Inc. 2012

Latest Printing: 14-Mar-12

SAW Demo Installation Guide

Introduction

This document is a simple step-by-step guide to downloading and opening the SAW Demo. It includes:

- Downloading the SAW Demo Folders.
- Installing the CubeViewer 4 Program.
- Opening the SAW Demo cubes.

The person preparing the demonstration will require the correct rights for installing programs on the target computer.

Prerequisites

The CubeViewer 4 program requires .Net Framework version 4.0 Client Profile (or full version). It will install the .Net Framework 4.0 Client Profile during the installation if it does not already exist on the target computer. But be warned, this is a fairly large download that can take several minutes to download and install and may require a reboot. So you may wish to perform this download ahead of time when it is more convenient.

The Microsoft Pivot Table services are required as a pre-requisite for the demo. These are generally installed as part of Microsoft Excel, but may not be present in all versions. If Microsoft Excel is not installed, or if a later 64 bit version of Excel is installed, you will need to install the Microsoft Pivot Table Services from the SAW Download Demo page. Install them if you are not sure—there is no real downside.

Section 1- Downloading the SAW Demo Folders

In this section we will follow the steps to download the SAW Demo Folders. You may download as many of the demo download folders as are available on the SAW Demo web page. Each will be installed into a separately named folder.

The SAW Demo folders are located on the Download Demo page of the www.cabotinc.ca website.

Either select the Download Demo in the header or the Download demo picture.

The screenshot shows the top of the SAW Demo website. At the top, there are logos for Cabot, Sales Analysis Warehouse, and a testimonial for SYSPRO customers. Below the logos is a navigation bar with the following links: Overview, Feedback, Features, Demo, Extensions, Pricing, News, Support, Sample Screens, How it Works, Download Demo (circled in red), Customers, Partners, and Contact Us. The main content area is titled 'Overview' and contains a description of the Sales Analysis Warehouse (SAW) system. To the right of the overview text is a large blue arrow pointing down to a CD icon, with the text 'Download the SAW Demo today.' circled in red. Below the overview text are links for 'Read what customers say about SAW ...' and 'Check out the SAW Features page ...'. On the left side, there is a section for 'ERP Products Supported' listing 'SYSPRO' and 'Microsoft Great Plains' with a 'More info...' button. On the right side, there are two PDF icons for 'SAW for SYSPRO' and 'SAW for Great Plains', each with a 'More info...' button. At the bottom of the page, there is a copyright notice: 'Copyright (C) 2009 Cabot Computer Solutions Inc. All Rights Reserved | Sales@CabotInc.ca | Support@CabotInc.ca | <http://www.cabotinc.ca>'.

Download SAW Demo

The SAW Demo provides you with an opportunity to experience how data extracted from a Syspro database and optimized for analysis.

Open or print the SAW Demo Installation Guide for step by step instructions or print the SAW Sales Demo Script for step by step instructions.

[SAW Demo Installation Guide](#)

[SAW Sales Demo Script](#)

[SAW Outdoors Demo Folders Installation \(3-2-0\)](#)

[SAW Juice Company Demo Folders Installation \(3-2-0\)](#)

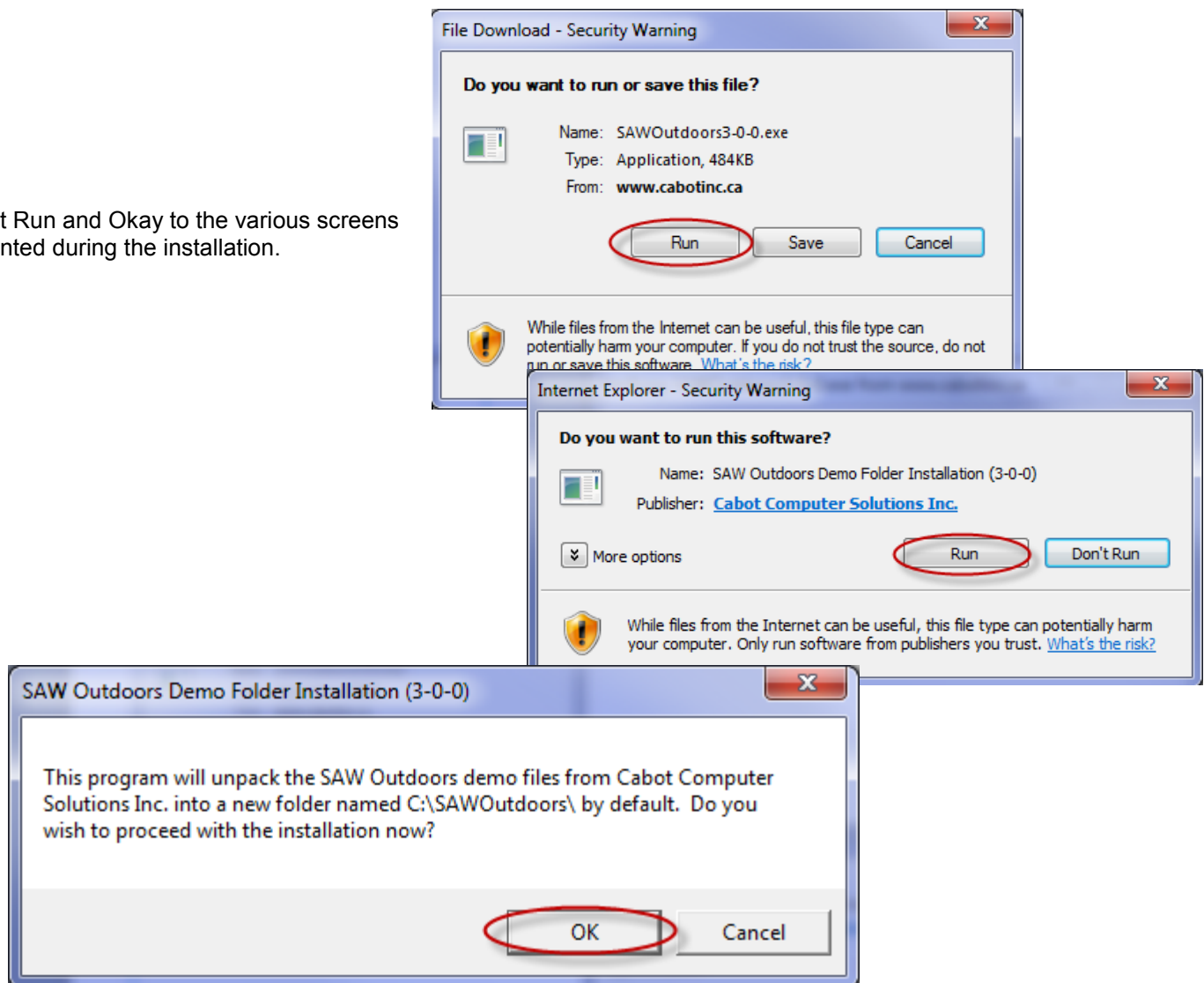
[Download CubeViewer 4 Installation](#)

Select the appropriate SAW xxxxxx Demo Folders Installation.

The SAW Outdoors uses data from the SYSPRO Outdoors company.

The SAW Juice Company is a fictional Juice company demo.

Select Run and Okay to the various screens presented during the installation.



In the WinZip self extractor screen select the folder location and press Unzip.

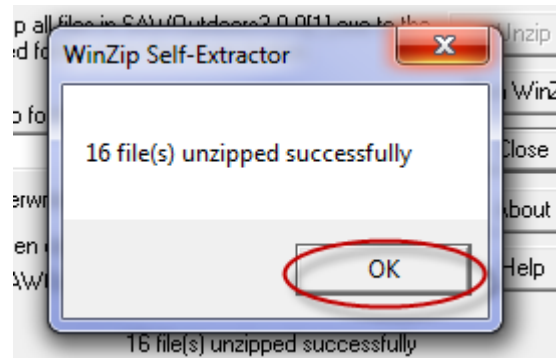
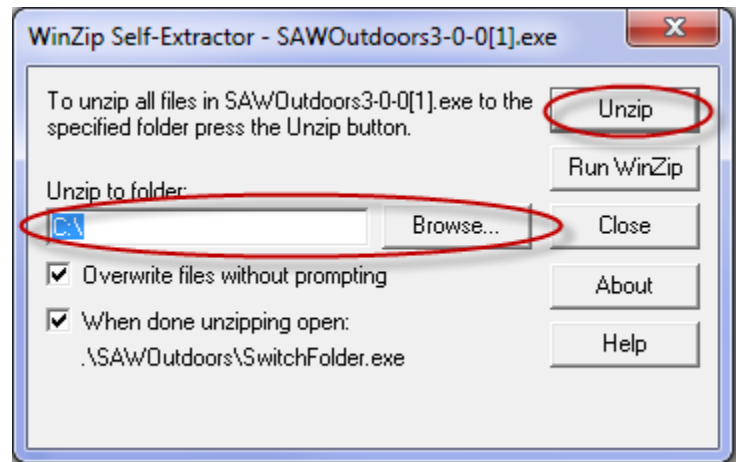
By default the folders install in the C:\ folder creating a sub-folder for the demo. For example:
C:\SAWOutdoors

It is okay if you wish to install it in a different location—the unpacking will reset any internal links required for the new installation location.

However, if you move the folder after the installation links will be broken and it would be safer to download a new version of the folder directly into the required location and delete the previous version of the folder.

Click OK on the 'unzipped successfully' screen.

The folders are now installed.



Section 2 - Installing the CubeViewer 4 Program

In this section we will follow the steps to download the CubeViewer 4 program.

As previously mentioned the CubeViewer 4 program requires .Net Framework version 4.0 Client Profile (or Extended). It will install the .Net Framework 4.0 Client Profile during the installation if it does not already exist on the target computer. But be warned, this is a fairly large download that can take several minutes to download and install and does require a reboot. So you may wish to perform this download ahead of time when it is more convenient.

Select the CubeViewer 4 Program Installation to begin.

If you are installing this program on a terminal server you may need to download and save the CubeViewer4Setup.msi files from this page and install the program through the Add/Remove Programs in the Windows control panel—check with the systems administrator whether this is necessary.

If this is not necessary, select the Run (or Open) option to directly install the program from the website.

Follow all the on-screen prompts.

Download SAW Demo

The SAW Demo provides you with an opportunity to experience how data extracted from a Syspro database and optimized for analysis.

Open or print the SAW Demo Installation Guide for step by step instructions or print the SAW Sales Demo Script for step by step instructions.

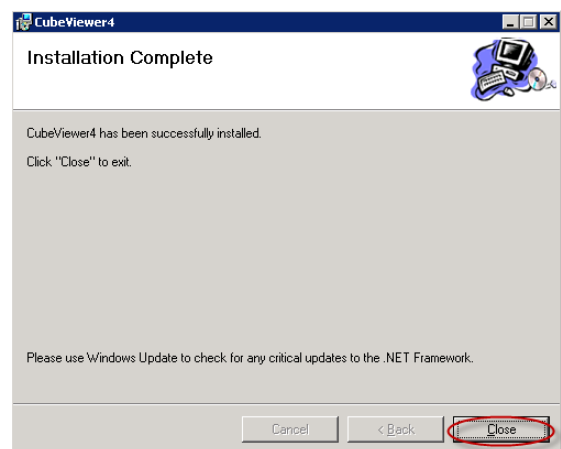
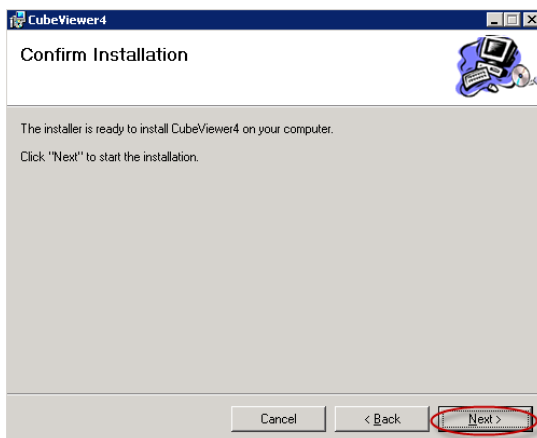
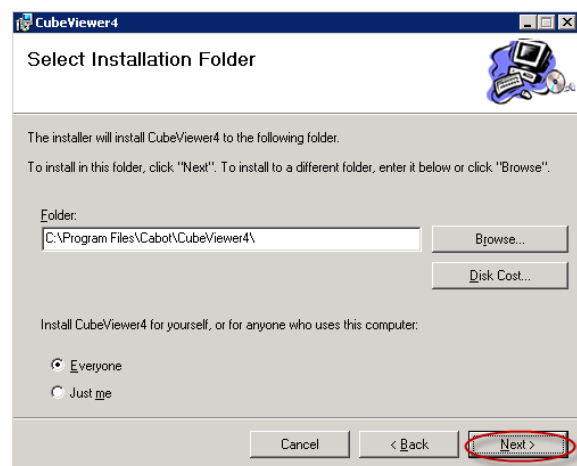
[SAW Demo Installation Guide](#)

[SAW Sales Demo Script](#)

[SAW Outdoors Demo Folders Installation \(3-2-0\)](#)

[SAW Juice Company Demo Folders Installation \(3-2-0\)](#)

[Download CubeViewer 4 Installation](#)



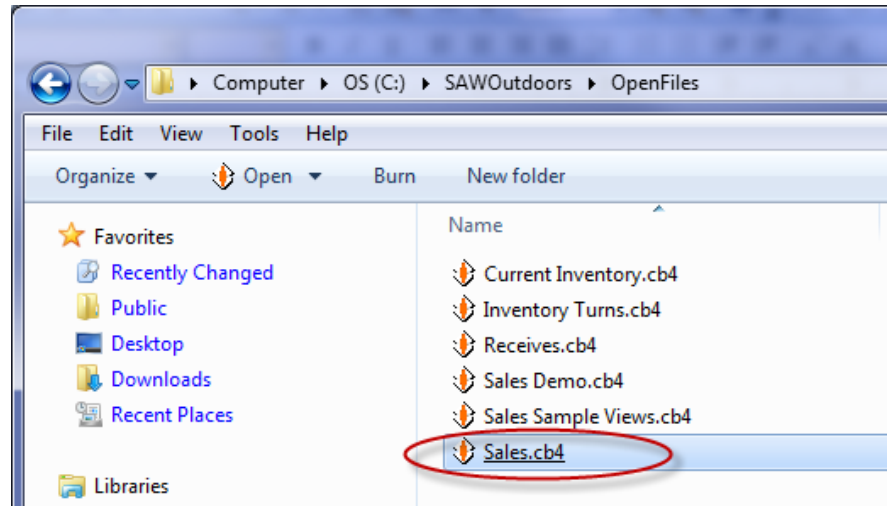
Section 3 - Opening the SAW Demo Cubes

In this section we will follow the steps to open the SAW Demo Cubes.

Locate the SAWOutdoors (or SAW-Juice folder) that you installed in Section 1 and navigate to the Open Files folder and select the Sales file in this folder.

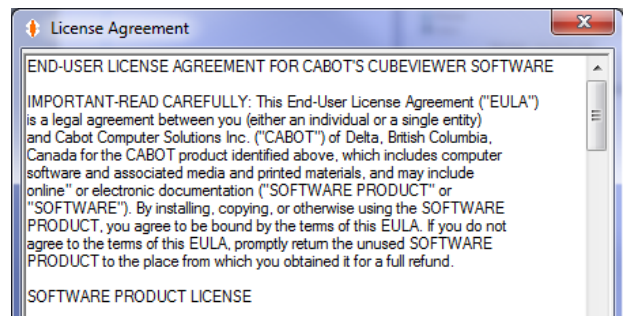
The SAW Sales Demos include Sales, Current Inventory and Inventory Turns cubes.

The SAW GL Demo includes Balance Sheet and Income Statement cubes.

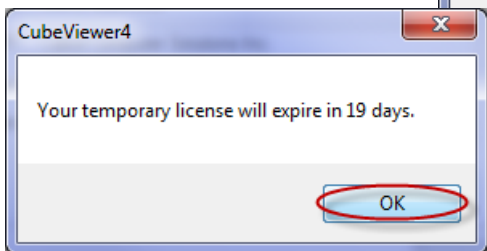
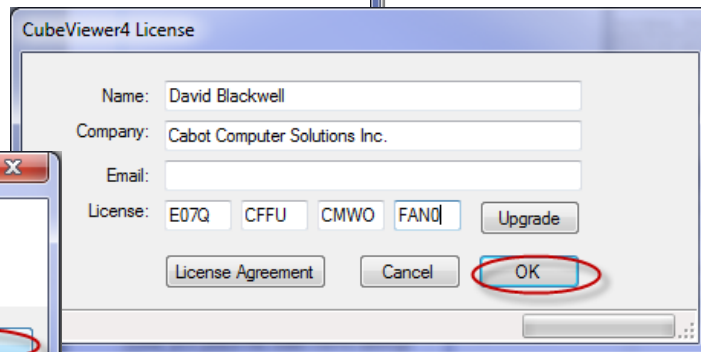


Accept the License Agreement and enter a Name and Company in the CubeViewer 4 License screen.

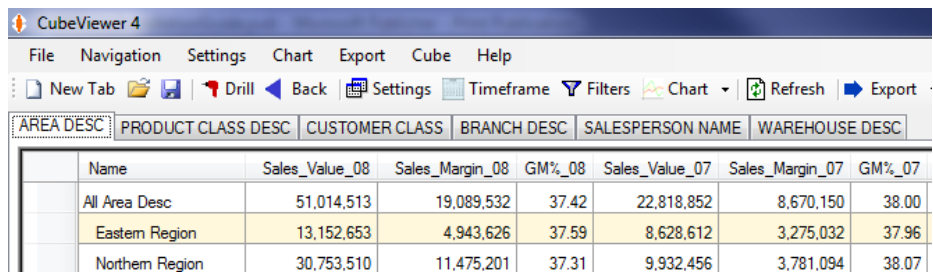
Press OK to install a 20 day temporary license.



Press OK to the temporary license message.



The CubeViewer program will open displaying sample data.



Please refer to the CubeViewer 4 Help for information for instructions on how to use the CubeViewer 4 program.

Note: There are copies of the settings files in the Open Files—Copy folder, should you wish to return to the original settings.