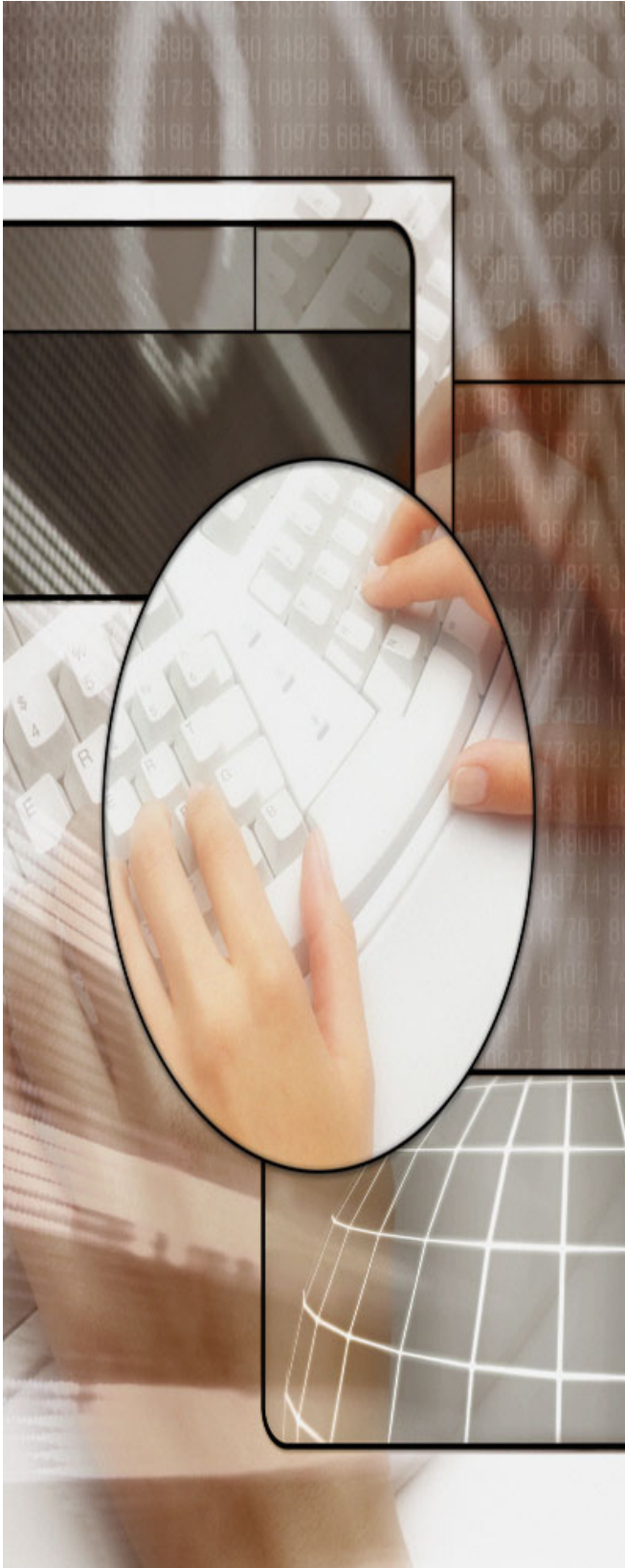


CubeViewer 4 Tutorial

User Guide

Copyright Cabot Computer Solutions Inc. 2010

Created: February-23-11



CubeViewer 4 Tutorial

The title page normally introduces your product or service. You might include the author's name, company name, company logo, copyright information, etc.

Table of Contents

1	Welcome	1
	Installing the SAW Juice Company Data	2
2	Tutorial	4
	Getting Started	5
	Opening the SAW Juice Company Data	6
	Using a different SAW Sales Analysis Source	8
	Understanding the Main CubeViewer 4 Screen	11
	Navigating Down through the Data	13
	Navigating Sideways Across the Data	15
	Changing the Chart Formats	18
	Exporting the Data and Charts	20
	Saving and Opening Settings Files	23
	Applying Filters	25
	Changing Measures, Calculations and Timeframe	27
	Changing the Display Style	29
	Cube Structure and Help	31

CubeViewer 4 Tutorial

Welcome

Welcome

Welcome to the CubeViewer 4 Tutorial. This tutorial is designed to give you a basic understanding of the operations of the CubeViewer 4 program by taking you through the most common functions within the program.

The tutorial is organized around the SAW Juice Company demonstration data that can be downloaded from the Cabot website (see [Installing the SAW Juice Company Data](#) section below).

If you prefer, you can run the tutorial using any SAW Sales Analysis cubes, on the understanding that the structure of the data may not be identical to that of the tutorial and that you may have to improvise on some of the steps.

Specifically, the names and number of levels in the cube dimensions may not be the same and you may need to drill down an additional level to get to the transaction level.

If you are unsure about doing this, please follow the instructions below to download the SAW Juice Company demonstration data.



[Installing the SAW Juice Company Data](#)

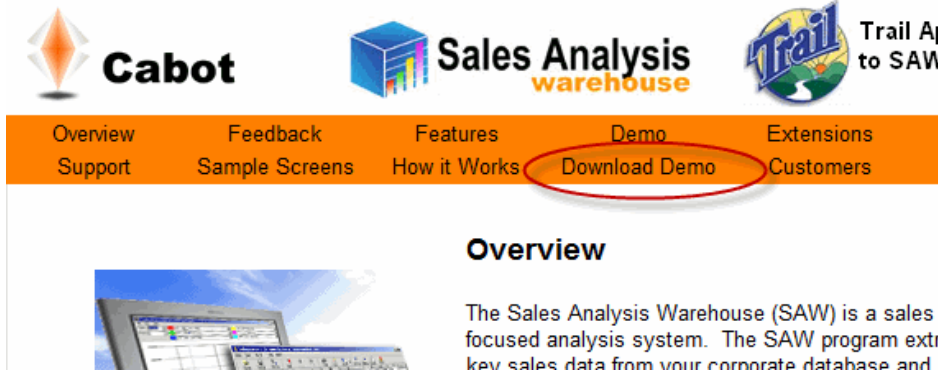
See also

[Tutorial](#)

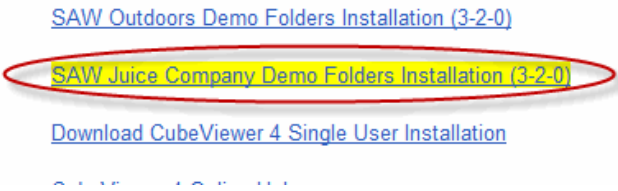
Home > Welcome > Installing the SAW Juice Company Data

Installing the SAW Juice Company Data

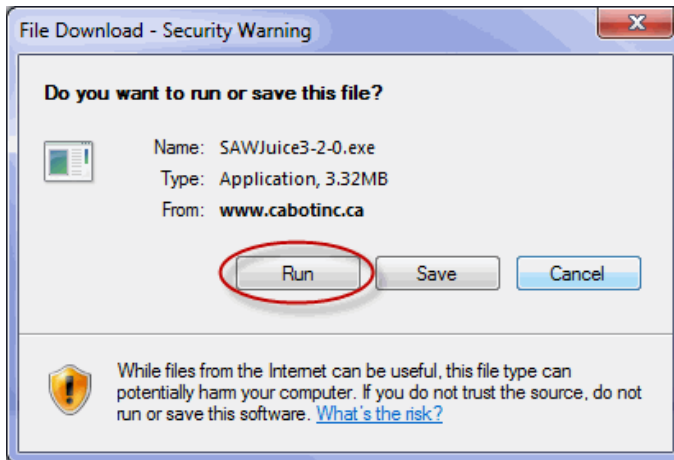
The SAW Juice Company demonstration data can be downloaded from the Download Demo page of the www.cabotinc.ca website.



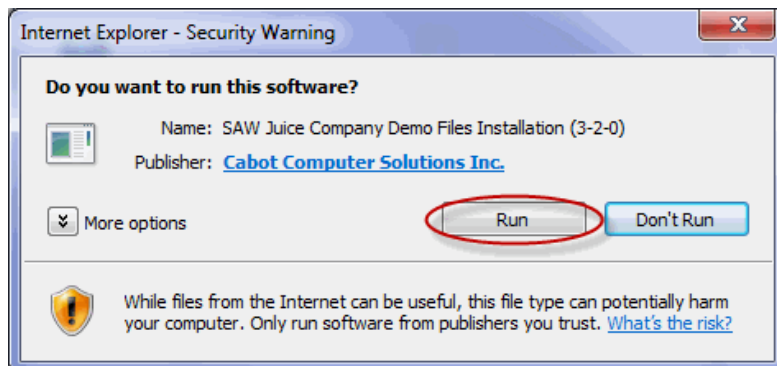
Select the SAW Juice Company Demo Folders Installation (3-n-n)



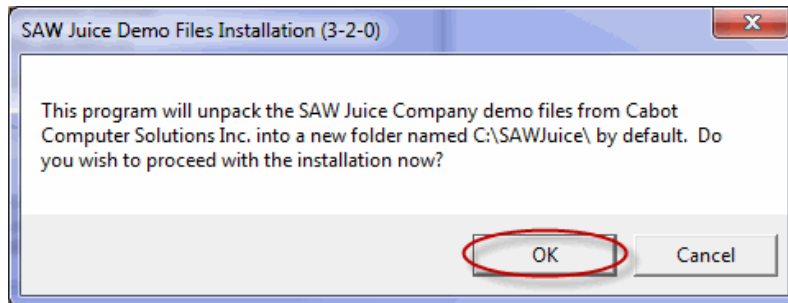
Click Run on the file download window.



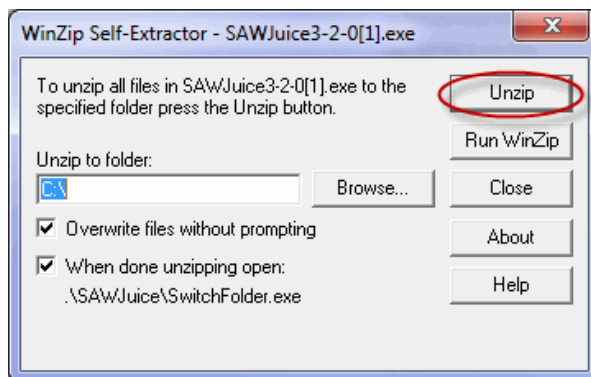
Click Run on the security warning window.



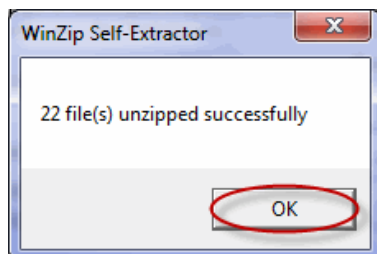
Click OK on the SAW Juice Demo Files Installation window.



Click Unzip on the Winzip Extractor window.



Click OK on the Unzip Successful window.



See also

[Home](#) > [Tutorial](#)

Tutorial

The tutorial is designed as a single session tutorial - some of the steps rely on steps completed in prior sessions. Please start on the first step - Getting Started - and work your way linearly through the rest of the sessions.



[Getting Started](#)



[Understanding the Main CubeViewer 4 Screen](#)



[Navigating Down through the Data](#)



[Navigating Sideways Across the Data](#)



[Changing the Chart Formats](#)



[Exporting the Data and Charts](#)



[Saving and Opening Settings Files](#)



[Applying Filters](#)



[Changing Measures, Calculations and Timeframe](#)



[Changing the Display Style](#)



[Cube Structure and Help](#)

See also

[Welcome](#)

[Home](#) > [Tutorial](#) > [Getting Started](#)

Getting Started

Get started by opening the CubeViewer 4 program attached to a SAW Sales Analysis cube source by choosing one of the following options:



[Opening the SAW
Juice Company Data](#)



[Using a different SAW
Sales Analysis Source](#)

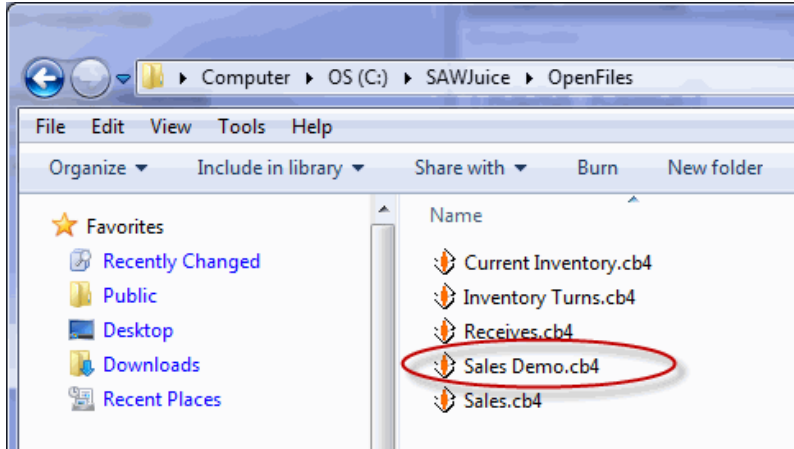
See also

- [Understanding the Main CubeViewer 4 Screen](#)
- [Navigating Down through the Data](#)
- [Navigating Sideways Across the Data](#)
- [Changing the Chart Formats](#)
- [Exporting the Data and Charts](#)
- [Saving and Opening Settings Files](#)
- [Applying Filters](#)
- [Changing Measures, Calculations and Timeframe](#)
- [Changing the Display Style](#)
- [Cube Structure and Help](#)

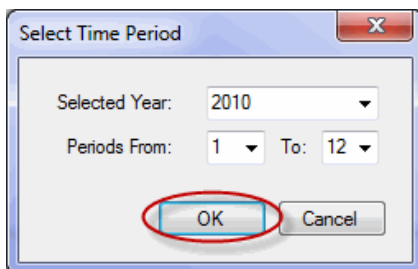
Home > Tutorial > Getting Started > Opening the SAW Juice Company Data

Opening the SAW Juice Company Data

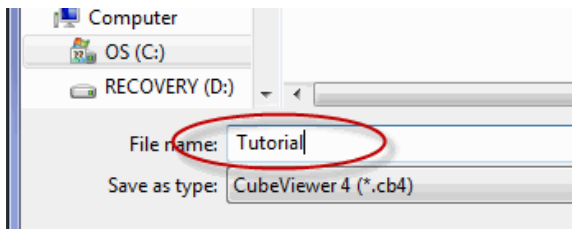
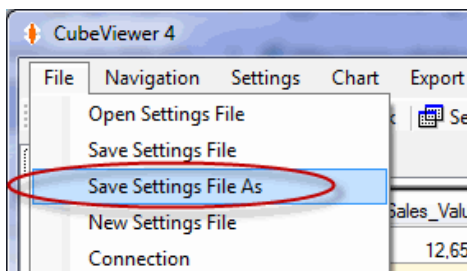
Open the CubeViewer program by double-clicking on the Sales Demo (.cb4) settings file in the OpenFiles folder of your Sales Demo.



Set the Time Period to the last complete Fiscal Year for the data - for the SAW Juice Company demo use Year 2010 periods 1 to 12.



Save the Settings file as "Tutorial" (File -> Save Settings File As .. menu option).



If at any time you accidentally overwrite the Tutorial file you can open the Sales Demo file and repeat the above steps to get it back to the correct state for the tutorial.

See also

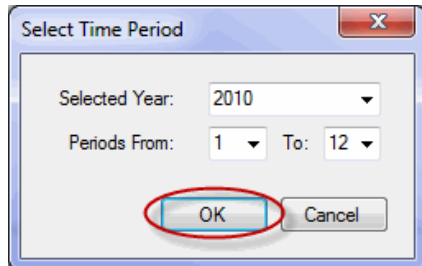
[Using a different SAW Sales Analysis Source](#)

Home > Tutorial > Getting Started > Using a different SAW Sales Analysis Source

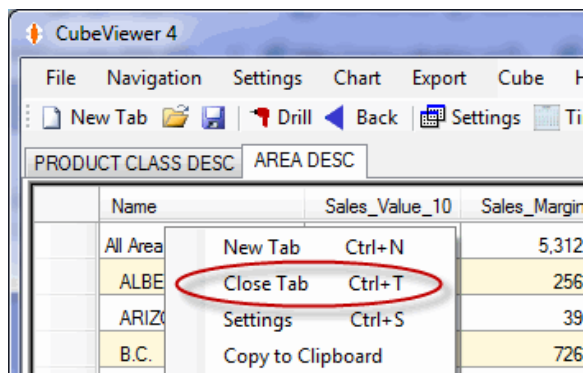
Using a different SAW Sales Analysis Source

To use a different source open the CubeViewer 4 program attached to a SAW Sales Analysis cube and then:

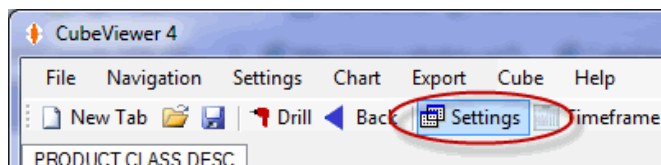
Set the the Time Period to the last complete year of data.



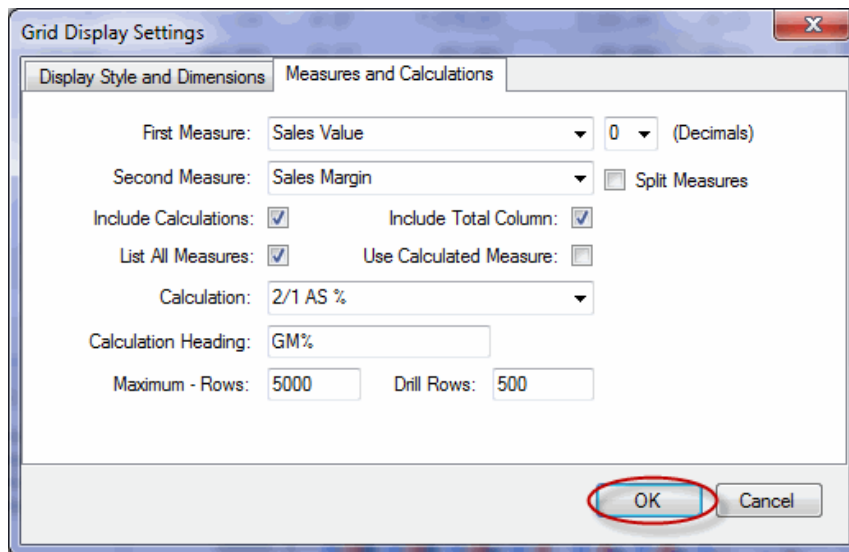
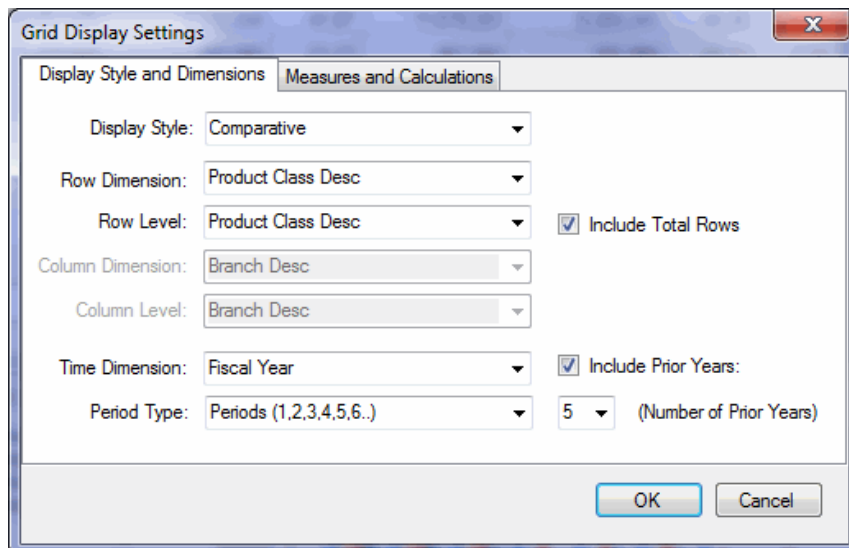
Close all but the first tab.



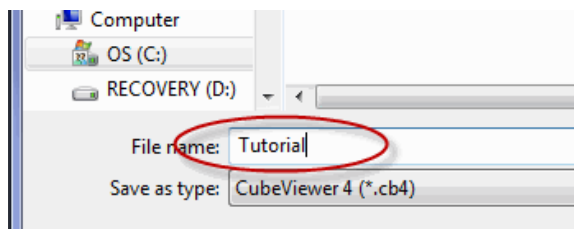
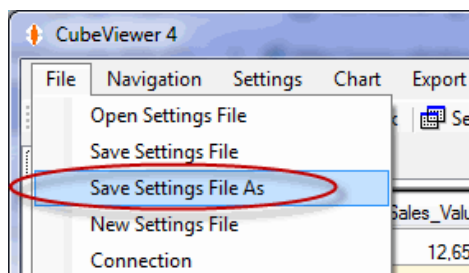
Open the Settings Screen.



And set the settings as close to the following settings as you can.



Save the Settings file as "Tutorial" (File -> Save Settings File As .. menu option).



You may want to make a copy of the Tutorial file just in case you accidentally overwrite it during the tutorial.

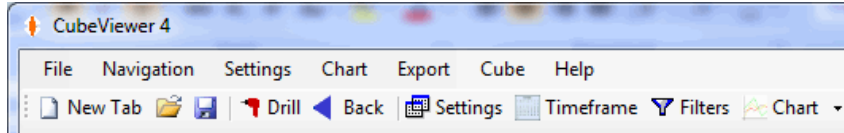
See also

[Opening the SAW Juice Company Data](#)

Home > Tutorial > Understanding the Main CubeViewer 4 Screen

Understanding the Main CubeViewer 4 Screen

The main CubeViewer 4 screen is split into three main sections: the Display Grid and two Charts. You control what and how things are displayed through the main Menu and Toolbar options.



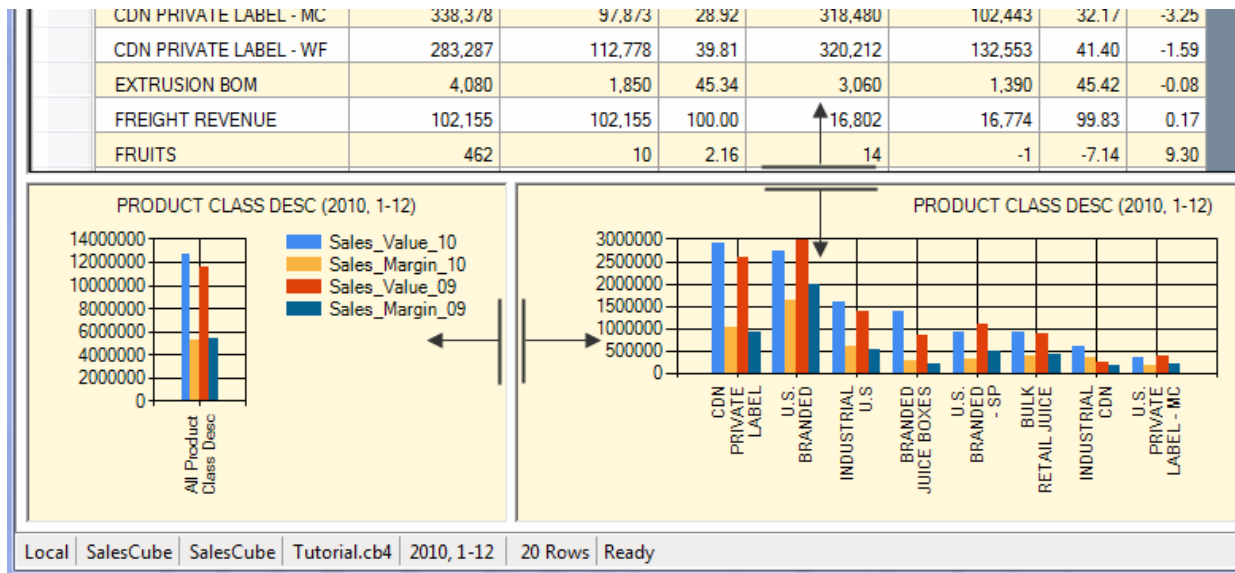
Or by using the right click context menus on the grid and charts.

Class Desc	12,657,025	5,312,094
PRIVATE LABEL	1,009,294	
U.S. BRANDED	1,647,621	
INDUSTRIAL U.S.	612,650	
BRANDED JUICE BOXES	292,855	
U.S. BRANDED - SP	320,651	
BULK RETAIL JUICE	386,368	
PRIVATE LABEL - MC	349,984	

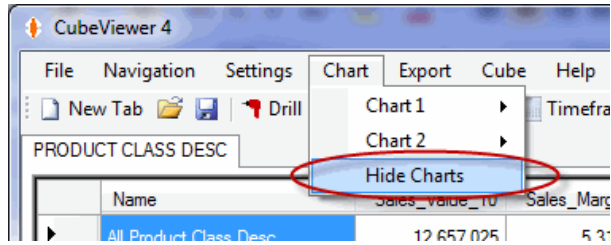
You can click on any of the column headings to sort the grid first in ascending order and then in descending order.

Name	Sales_Value_10
All Product Class Desc	12,657,025
CDN PRIVATE LABEL	2,915,625
U.S. BRANDED	2,723,402
INDUSTRIAL U.S.	1,606,806
BRANDED JUICE BOXES	1,370,680
U.S. BRANDED - SP	935,172
BULK RETAIL JUICE	918,003

The left chart shows summary information and the right chart shows detail. You have the ability to change the size of the sections.



Or to hide the charts entirely.



Ensure that you have the charts displaying before moving on to the next section.

See also

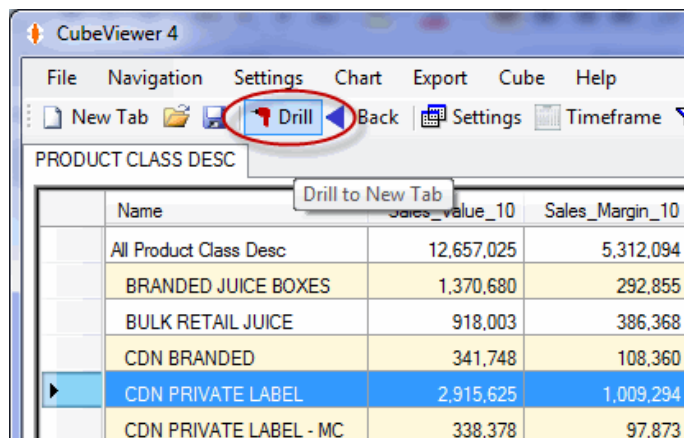
- [Getting Started](#)
- [Navigating Down through the Data](#)
- [Navigating Sideways Across the Data](#)
- [Changing the Chart Formats](#)
- [Exporting the Data and Charts](#)
- [Saving and Opening Settings Files](#)
- [Applying Filters](#)
- [Changing Measures, Calculations and Timeframe](#)
- [Changing the Display Style](#)
- [Cube Structure and Help](#)

Home > Tutorial > Navigating Down through the Data

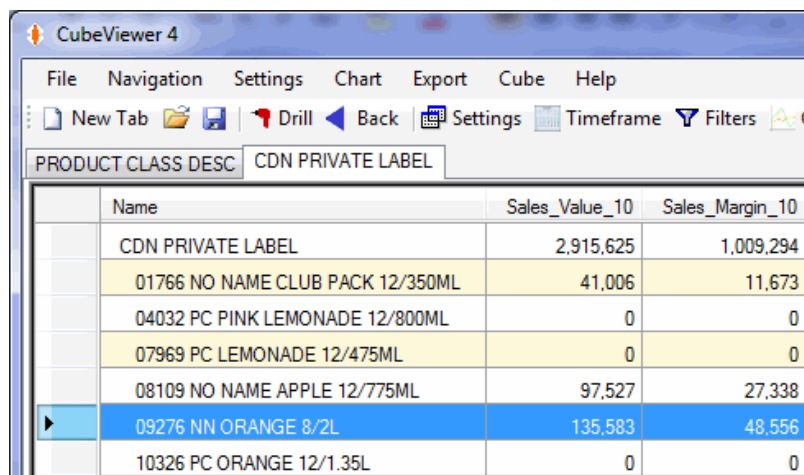
Navigating Down through the Data

This section shows you how to navigate down through the levels of the cube from the summary overview to the detail transaction level.

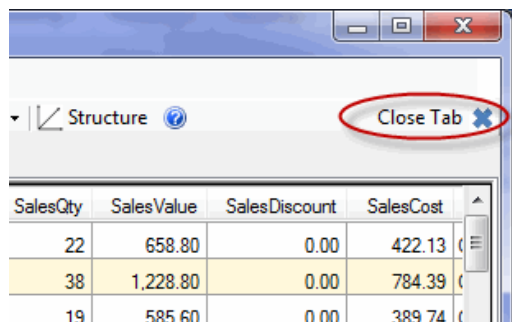
Position on one of the large Product Class lines in the Display grid and click on the Drill toolbar button to open a new tab displaying the Products from the selected Product Class.



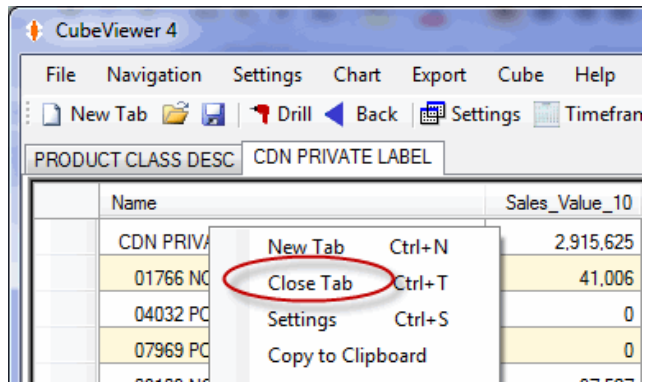
Double-click on one of the Products in the Product Class to open a new tab with the transactions from the selected Product.



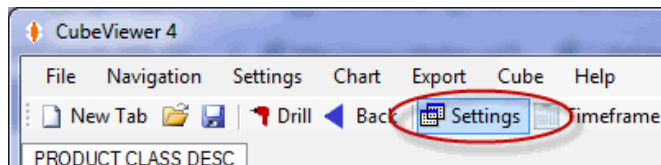
Click on the Close Tab toolbar button to close the tab of the transactions.



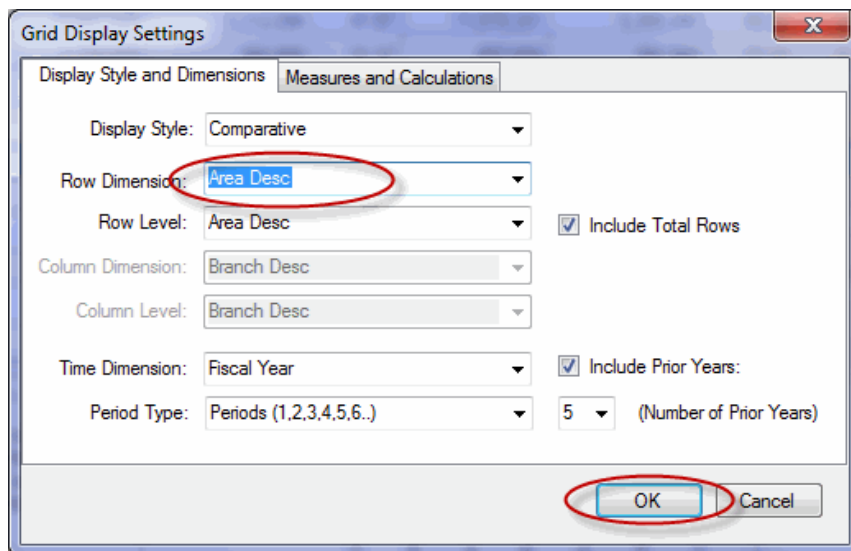
Right click on the Products Tab and select the Close Tab menu option to close the Products screen.



Click on the Settings toolbar button to open the Display Grid Settings screen.



Select the Area Desc dimension as the Row Dimension and click the OK button to change the grid to a display of the Areas.



Repeat the exercise of drilling through the levels to the transaction level with the new dimension and repeat closing the opened tabs.

To finish this section reset the Row Dimension to the Product Class Desc and leave the CubeViewer 4 program open with just one open tab.

See also

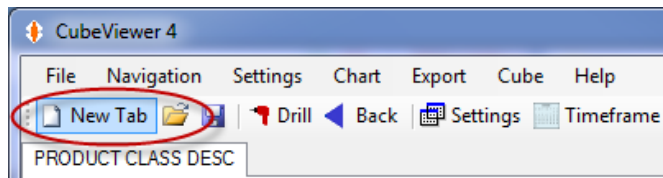
[Getting Started](#)
[Understanding the Main CubeViewer 4 Screen](#)
[Navigating Sideways Across the Data](#)
[Changing the Chart Formats](#)
[Exporting the Data and Charts](#)
[Saving and Opening Settings Files](#)
[Applying Filters](#)
[Changing Measures, Calculations and Timeframe](#)
[Changing the Display Style](#)
[Cube Structure and Help](#)

Home > Tutorial > Navigating Sideways Across the Data

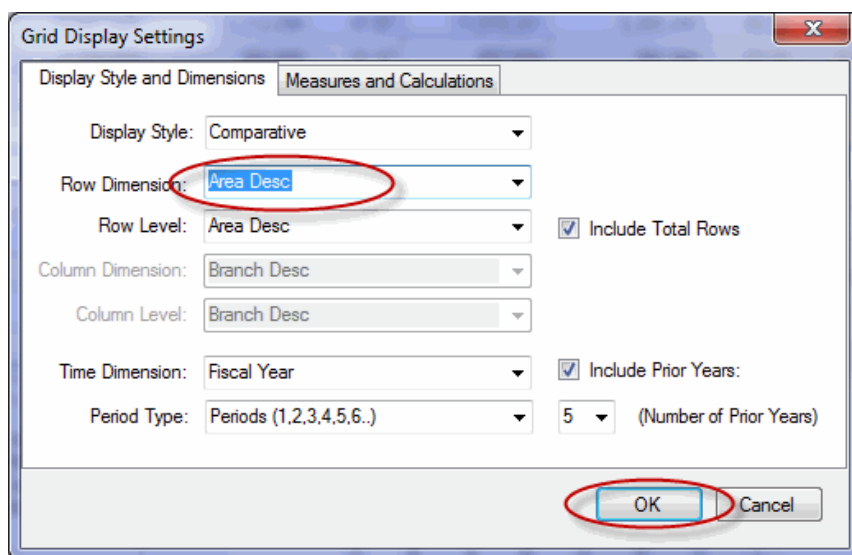
Navigating Sideways Across the Data

This section shows you how to move sideways across the cube data opening new tabs for some of the mainy dimensions stored in the cubes.

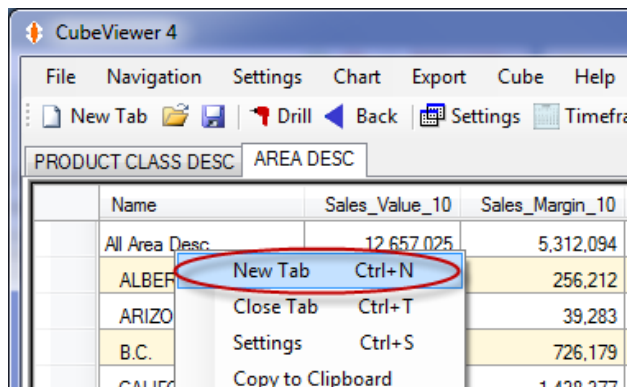
Click on the New Tab toolbar button to open the Grid Display Settings dialog window.



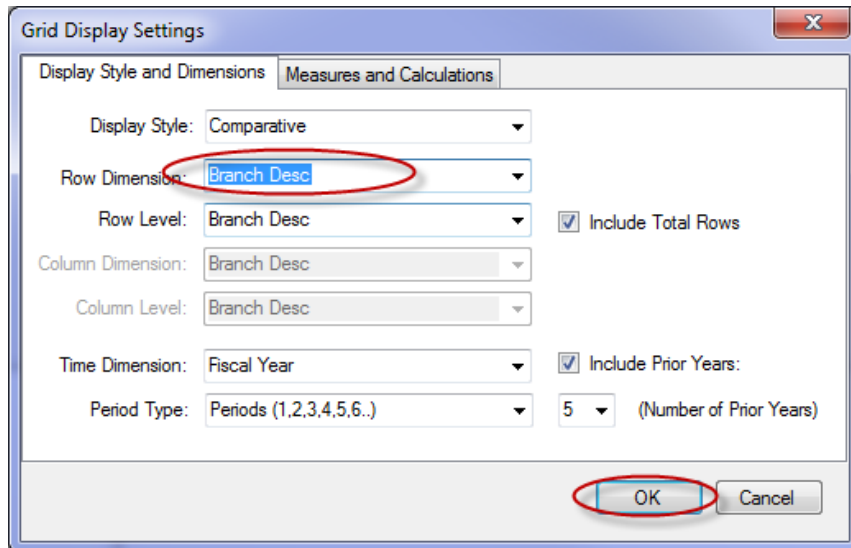
Select Area Desc in the Row Dimension and press OK.



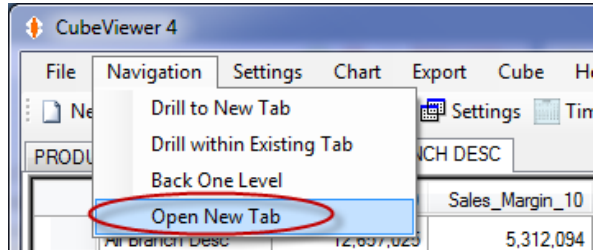
Right click in the new grid and select the New Tab menu option to open the Grid Display Settings dialog window.



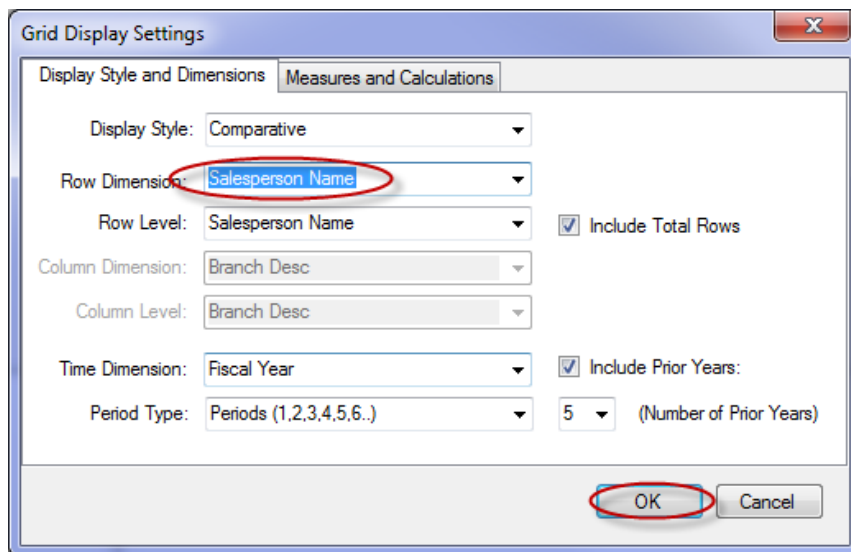
Select Branch Desc in the Row Dimension and press OK.



Select the Navigation -> Open New Tab main menu option to open the Grid Display Settings dialog window.



Select Salesperson Name in the Row Dimension and press OK.



You should now have four tabs open in the CubeViewer 4 program and can freely move between each tab.

Leave the program open with the four tabs open to finish this section.

See also

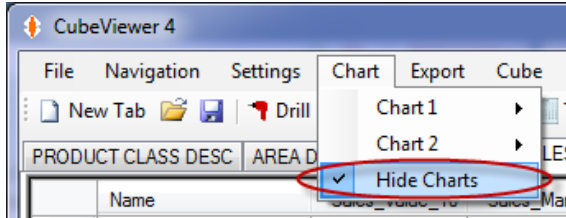
[Getting Started](#)
[Understanding the Main CubeViewer 4 Screen](#)
[Navigating Down through the Data](#)

Changing the Chart Formats
Exporting the Data and Charts
Saving and Opening Settings Files
Applying Filters
Changing Measures, Calculations and Timeframe
Changing the Display Style
Cube Structure and Help

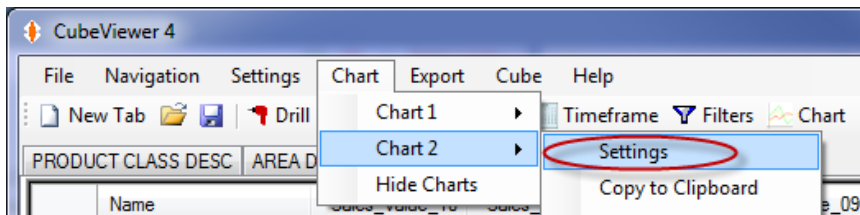
Home > Tutorial > Changing the Chart Formats

Changing the Chart Formats

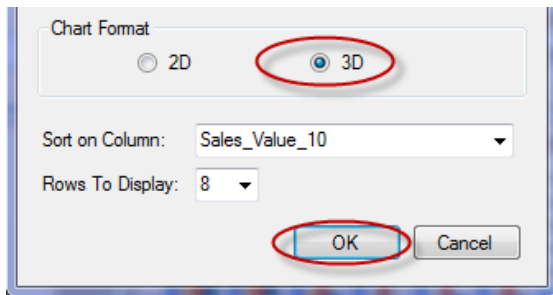
This section shows you how to change the format of the charts in each tab. If the charts are not currently displaying in the main CubeViewer screen, click on the Charts -> Hide Charts main menu option to uncheck it and show the charts.



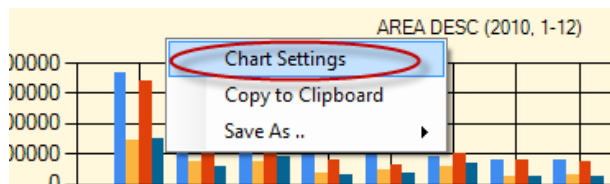
Click on the first tab and then select the Chart -> Chart 2 -> Settings main menu option.



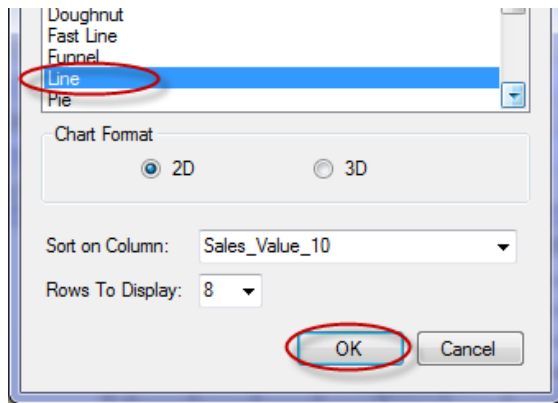
Click on the Chart Format 3D option button and click OK to change the Chart 2 in the first tab to a 3D format.



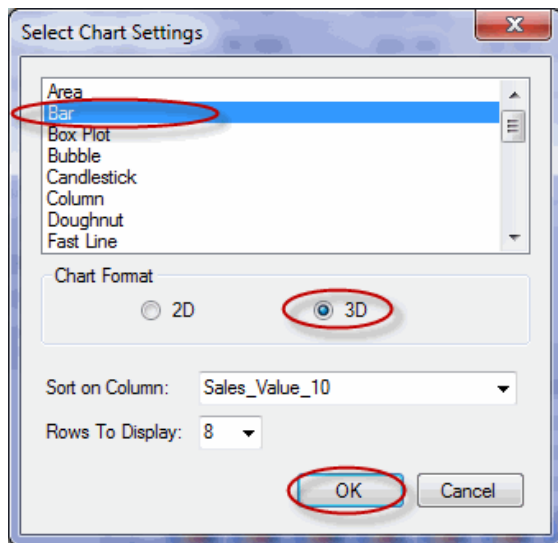
Click on the second tab and then right click on the second chart and select the Settings menu option.



Click on the Line chart type and click OK.



Click on the third tab and select the Settings menu option and then select the Bar chart type and the 3D chart format option button and click OK.



You should now have four tabs open with different chart styles in each tab.

Leave the program open with the four tabs open to finish this section.

See also

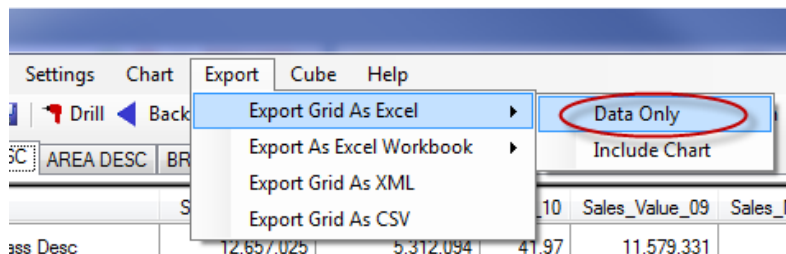
- [Getting Started](#)
- [Understanding the Main CubeViewer 4 Screen](#)
- [Navigating Down through the Data](#)
- [Navigating Sideways Across the Data](#)
- [Exporting the Data and Charts](#)
- [Saving and Opening Settings Files](#)
- [Applying Filters](#)
- [Changing Measures, Calculations and Timeframe](#)
- [Changing the Display Style](#)
- [Cube Structure and Help](#)

Home > Tutorial > Exporting the Data and Charts

Exporting the Data and Charts

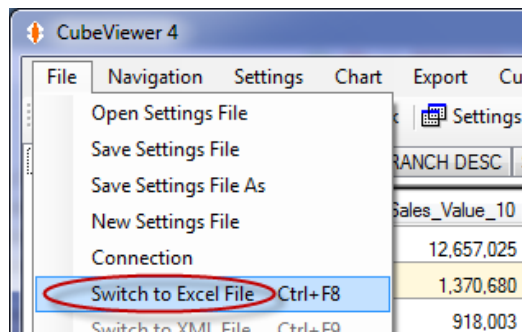
This section shows you how to easily export and share the data and charts with other applications. However, please note that the Export to Excel options are only available on computers that have Microsoft Excel installed.

Click on the first tab and select the Export -> Export Grid as Excel -> Data Only main menu option.



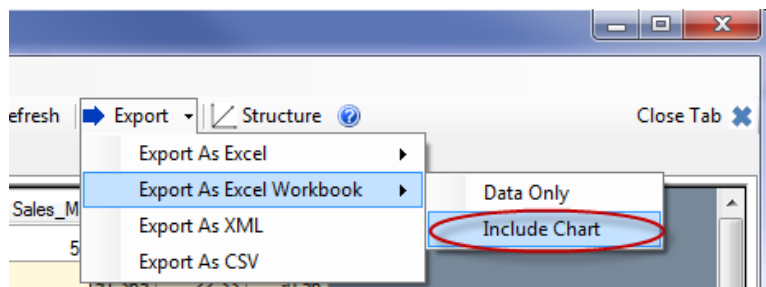
Select an appropriate name and location for the export.

Click on the File -> Switch To Excel File main menu option to open the exported spreadsheet.

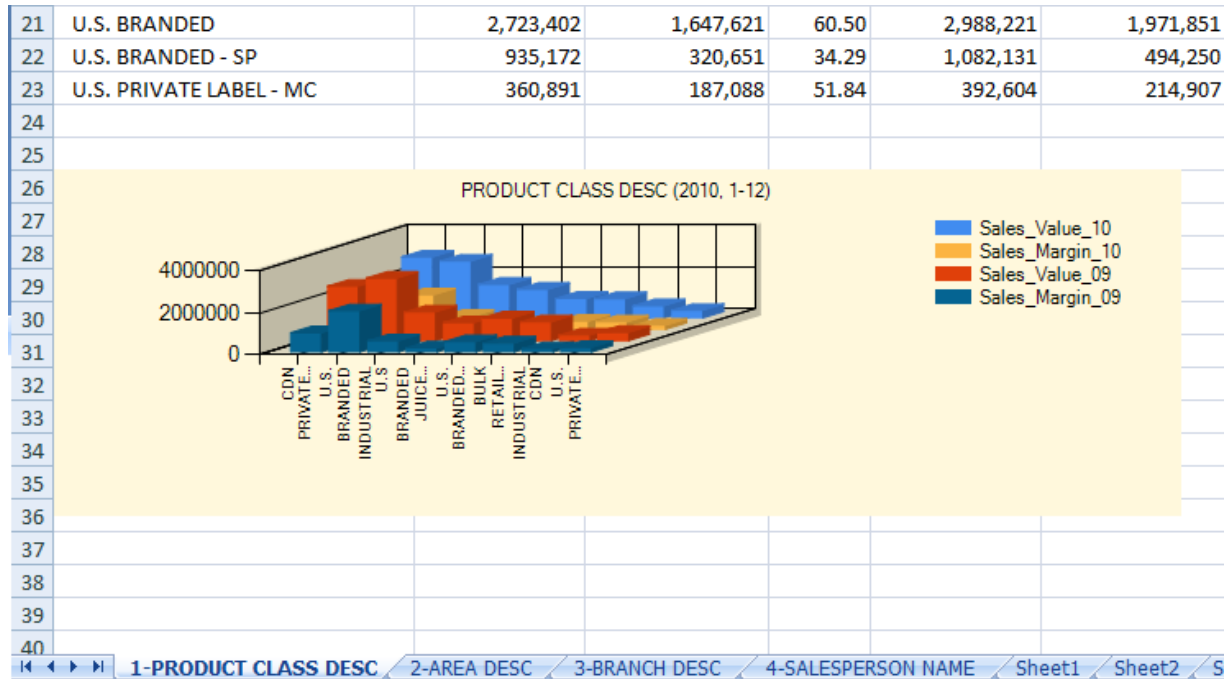


	A	B	C	D
1	PRODUCT CLASS DESC (2010, 1-12)			
2				
3	Name	Sales_Value_10	Sales_Margin_10	GM%_10
4	All Product Class Desc	12,657,025	5,312,094	41.97
5	BRANDED JUICE BOXES	1,370,680	292,855	21.37
6	BULK RETAIL JUICE	918,003	386,368	42.09
7	CDN BRANDED	341,748	108,360	31.71
8	CDN PRIVATE LABEL	2,915,625	1,009,294	34.62
9	CDN PRIVATE LABEL - MC	338,378	97,873	28.92

Close the Excel spreadsheet and then click on the Export -> Export As Excel Workbook -> Include Chart toolbar button option.



Click on the File -> Switch To Excel File main menu option to open the exported workbook, which will include a spreadsheet for each tab with the chart included in each spreadsheet.



Close the Excel workbook and click on the top left cell of the first tab to select the entire grid (all cells should turn blue). Right click on the grid and select the Copy to Clipboard menu option.

PRODUCT CLASS DESC	AREA DESC	BRANCH DESC	SALESPERSON NAME
	Name	Sales_Value_10	Sales_Margin_10
	All Product Class Desc	12,657,025	5,312,094
	BRA	370,680	292,855
	BUL	918,003	386,368
	CDN	341,748	108,360
	CDN	915,625	1,009,294
	CDN	338,378	97,873
	CDN	283,287	112,778

Open Word from Start -> Programs menu. Change the page layout to Landscape and then Edit -> Paste the clipboard into the document. The grid will be copied in as a Word table.

Leave the Word document open and return to the CubeViewer program. Select a portion of the grid data and repeat the Copy to Clipboard option.

	BRANDED JUICE BOXES	1,370,680	292,855
	BULK RETAIL JUICE	918,003	386,368
	CDN BRAN		108,360
	CDN PRIVA		1,009,294
	CDN PRIVA		97,873
	CDN PRIVA		112,778
	EXTRUSION		1,850
	FREIGHT R		102,155

Return to the Word document, tab down below the imported grid and then paste in the section of the grid.

Leave the program open with the four tabs open to finish this section.

See also

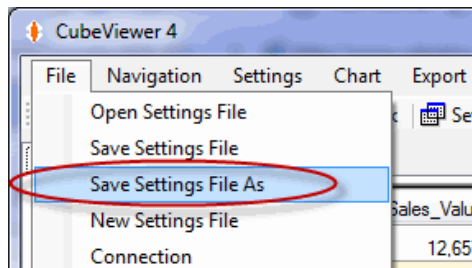
- Getting Started
- Understanding the Main CubeViewer 4 Screen
- Navigating Down through the Data
- Navigating Sideways Across the Data
- Changing the Chart Formats
- Saving and Opening Settings Files
- Applying Filters
- Changing Measures, Calculations and Timeframe
- Changing the Display Style
- Cube Structure and Help

Home > Tutorial > Saving and Opening Settings Files

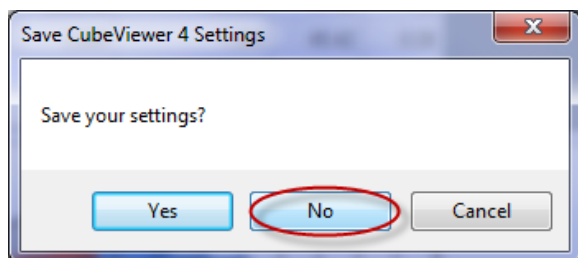
Saving and Opening Settings Files

This section shows you have to save and re-open the various views that you create.

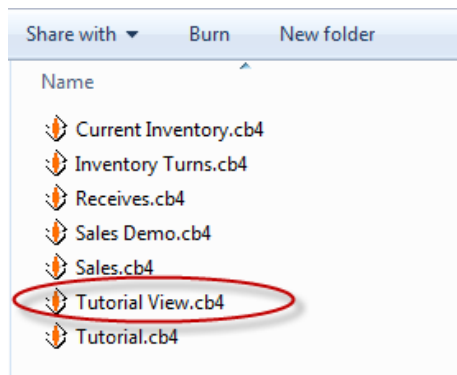
With the four tabs open from the previous section, select the File -> Save Settings File As .. main menu option.



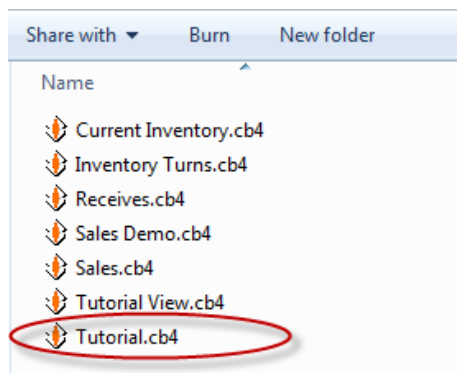
Enter the name as "Tutorial View" and then close down the CubeViewer program without saving.



In the Open Files folder you should now see the new Tutorial View settings file (.cb4). Double click on this file to open the CubeViewer 4 program with all the tabs configured as per the previous sections.



Once the program has finished loading, select the File -> Open Settings File main menu option and select the Tutorial settings file to open.



You should be back to a single active tab as per the start of the Tutorial. Leave the program open with the single tab active.

See also

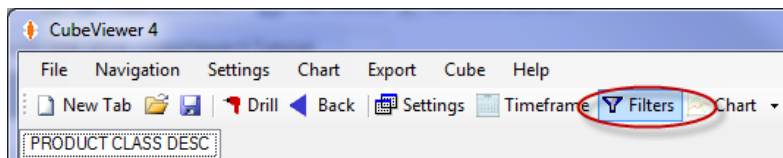
- [Getting Started](#)
- [Understanding the Main CubeViewer 4 Screen](#)
- [Navigating Down through the Data](#)
- [Navigating Sideways Across the Data](#)
- [Changing the Chart Formats](#)
- [Exporting the Data and Charts](#)
- [Applying Filters](#)
- [Changing Measures, Calculations and Timeframe](#)
- [Changing the Display Style](#)
- [Cube Structure and Help](#)

Home > Tutorial > Applying Filters

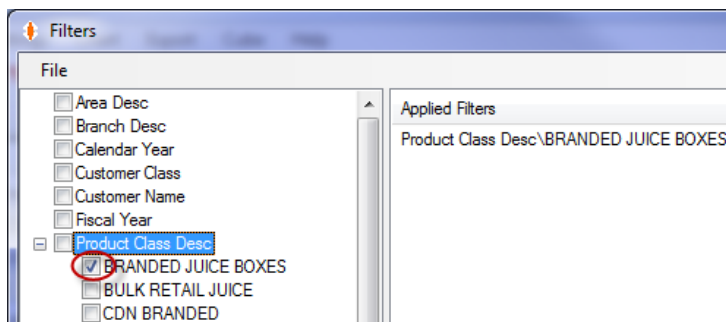
Applying Filters

This section shows you how to apply filters to view and analyze sub-sets of the cube data.

Make a note of a couple of the large Product Classes in the current Grid. Select the Filters toolbar button.



In the Filters screen, double click on the Product Class Desc name to expand the dimension tree and then check one of the Product Classes that you made a note of.



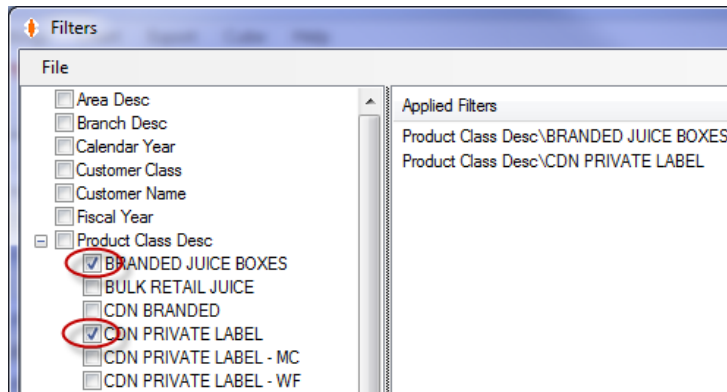
Close the Filters screen to display the single Product Class. Open the Settings window and change the Row Dimension to Area Desc and click okay to display the sales of the selected Product Class by Area.

AREA DESC (BRANDED JUICE BOXES)				
	Name	Sales_Value_10	Sales_Margin_10	GM%_10
	All Area Desc	1,370,680	292,855	21.37
	CALIFORNIA	1,358,222	287,603	21.17
	COLORADO	10,968	4,863	44.34
	EAST OF MISSOURI	1,488	388	26.08

Right click on the grid and open a new tab. Change the Row Dimension to Customer Class to display the sales of the selected Product Class by Customer Class.

AREA DESC (BRANDED JUICE BOXES)		CUSTOMER CLASS (BRANDED JUICE BOXES)				
	Name	Sales_Value_10	Sales_Margin_10	GM%_10	Sales_Value_09	Sales_Margin_09
	All Customer Class	1,370,680	292,855	21.37	857,092	191,369
	L	1,239,266	247,838	20.00	857,092	191,369
	M	129,924	44,628	34.35	0	0
	S	1,488	388	26.08	0	0

Click on the Filters toolbar button, expand the Product Class Desc tree and then check the second Product Class that you made a note of.



Close the Filters screen to display the sales of either of the Product Classes by Customer Class.

AREA DESC (BRANDED JUICE BOXES)		CUSTOMER CLASS (BRANDED JUICE BOXES, CDN PRIVATE LABEL)				
	Name	Sales_Value_10	Sales_Margin_10	GM%_10	Sales_Value_09	Sales_Margin_09
	All Customer Class	4,286,305	1,302,150	30.38	3,456,908	1,107,526
	L	3,977,849	1,176,574	29.58	3,335,721	1,048,034
	M	306,966	125,187	40.78	121,186	59,491
	S	1,488	388	26.08	0	0

Double click on one of the Customer Class lines to open a new tab listing all the Customers in that Customer Class that have purchased either of the selected Product Classes.

AREA DESC (BRANDED JUICE BOXES)		CUSTOMER CLASS (BRANDED JUICE BOXES, CDN PRIVATE LABEL)					M (BRANDED JUICE BOXES, CDN PRIVATE LABEL)		
	Name	Sales_Value_10	Sales_Margin_10	GM%_10	Sales_Value_09	Sales_Margin_09	GM%_09	INC	
	M	306,966	125,187	40.78	121,186	59,491	49.09	-8.31	
	ALBERTSON'S, INC. #2	10,968	4,863	44.34	0	0	0.00	44.34	
	GROCERY OUTLET INC.	0	0	0.00	5,460	2,346	42.97	-42.97	
	PROVIGO DISTRIBUTION INC.	177,041	80,559	45.50	115,726	57,144	49.38	-3.88	
	SUPER STORE INDUSTRIES	24,955	10,437	41.82	0	0	0.00	41.82	
	WEST COAST LIQUIDATORS, INC	94,000	29,327	31.20	0	0	0.00	31.20	

Close the CubeViewer 4 program without saving the settings to finish this section.

See also

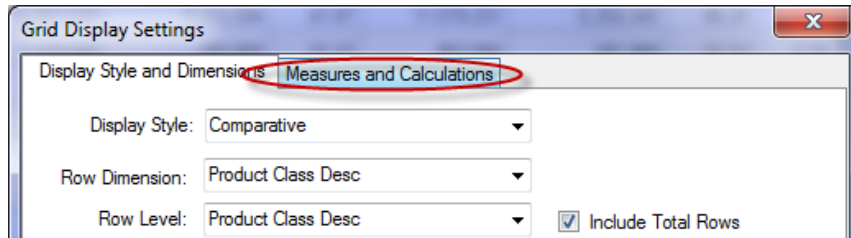
[Getting Started](#)
[Understanding the Main CubeViewer 4 Screen](#)
[Navigating Down through the Data](#)
[Navigating Sideways Across the Data](#)
[Changing the Chart Formats](#)
[Exporting the Data and Charts](#)
[Saving and Opening Settings Files](#)
[Changing Measures, Calculations and Timeframe](#)
[Changing the Display Style](#)
[Cube Structure and Help](#)

Home > Tutorial > Changing Measures, Calculations and Timeframe

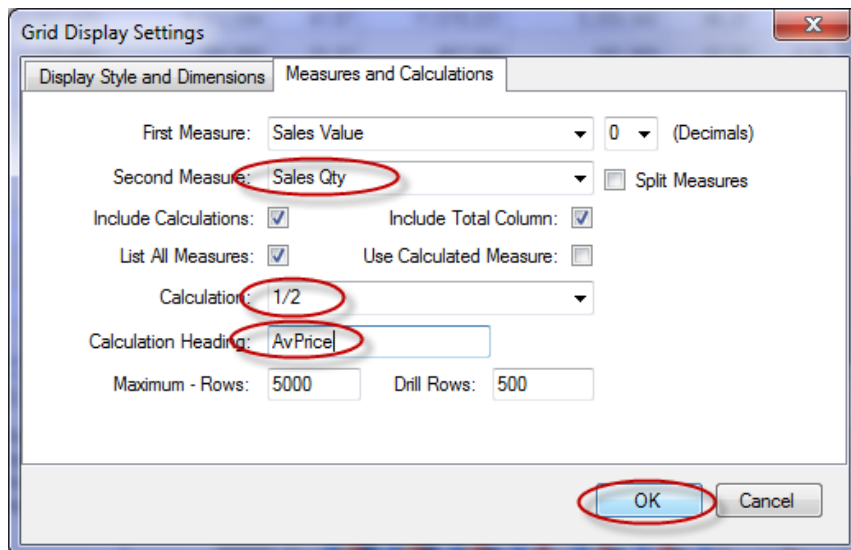
Changing Measures, Calculations and Timeframe

This section shows you have to look at different values, use different calculations and view the cube data over different timeframes.

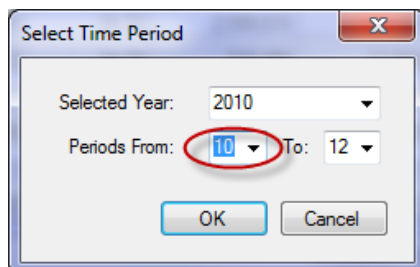
Open the CubeViewer 4 program by double clicking on the Tutorial settings file. Click on the Settings toolbar button and then click on the Measures and Calculations tab.



Change the Second Measure to Sales Qty, the Calculation to 1/2 and the Calculation Heading to AvPrice and click OK to show an average price calculation in the grid.



Click on the Timeframe toolbar button and change the From Period to 10 to display sales for the last 3 periods only.



PRODUCT CLASS DESC				
	Name	Sales_Value_10	Sales_Qty_10	AvPrice_10
	All Product Class Desc	4,413,320	662,590	6.66
	BRANDED JUICE BOXES	462,550	33,563	13.78
	BULK RETAIL JUICE	312,941	25,683	12.18
	CDN BRANDED	114,998	4,713	24.40
	CDN PRIVATE LABEL	989,543	38,261	25.86
	CDN PRIVATE LABEL - MC	117,035	4,766	24.56

Close the CubeViewer 4 program without saving the settings to finish this section.

See also

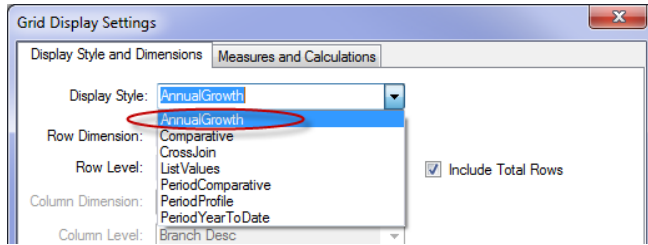
- [Getting Started](#)
- [Understanding the Main CubeViewer 4 Screen](#)
- [Navigating Down through the Data](#)
- [Navigating Sideways Across the Data](#)
- [Changing the Chart Formats](#)
- [Exporting the Data and Charts](#)
- [Saving and Opening Settings Files](#)
- [Applying Filters](#)
- [Changing the Display Style](#)
- [Cube Structure and Help](#)

Home > Tutorial > Changing the Display Style

Changing the Display Style

This sections shows you the seven different display styles supported by the CubeViewer 4 program.

Open the CubeViewer 4 program by double clicking on the Tutorial settings file. Click on the New Tab toolbar button and change the Display Style to Annual Growth.



AnnualGrowth:

PRODUCT CLASS DESC	PRODUCT CLASS DESC						
Name	Sales_Value_10	Chg_10	Pct_10	Sales_Value_09	Chg_09	Pct_09	
All Product Class Desc	12,657,025	1,077,694	9.30	11,579,331	3,162,600	37.57	
BRANDED JUICE BOXES	1,370,680	513,588	59.92	857,092	0	0.00	
BULK RETAIL JUICE	918,003	23,070	2.57	894,933	110,467	14.08	
CDN BRANDED	341,748	15,510	4.75	326,238	17,199	5.56	

Create new tabs with each of the other Display Styles. When choosing the CrossJoin display style se the Column Dimension to Area Desc.

CrossJoin:

PRODUCT CLASS DESC	PRODUCT CLASS DESC	PRODUCT CLASS DESC				
Name	All_Area_Desc	ALBERTA	ARIZONA	B.C.	CALIFORNIA	
All Product Class Desc	12,657,025	820,418	63,777	1,866,036	3,682,070	
BRANDED JUICE BOXES	1,370,680	0	0	0	1,358,222	
BULK RETAIL JUICE	918,003	25,400	0	210,933	414	
CDN BRANDED	341,748	97,813	0	123,441	0	
CDN PRIVATE LABEL	2,915,625	696,318	0	830,737	0	

ListValues:

PRODUCT CLASS DESC	PRODUCT CLASS DESC	PRODUCT CLASS DESC	PRODUCT CLASS DESC	
Name	Sales_Qty_10	Sales_Value_10	Sales_Cost_10	Sales_Margin_10
All Product Class Desc	2,216,366	12,657,025	7,344,930	5,312,094
BRANDED JUICE BOXES	92,085	1,370,680	1,077,824	292,855
BULK RETAIL JUICE	73,360	918,003	531,635	386,368
CDN BRANDED	14,039	341,748	233,388	108,360
CDN PRIVATE LABEL	117,960	2,915,625	1,906,330	1,009,294

PeriodComparative:

PRODUCT CLASS DESC	PRODUCT CLASS DESC	PRODUCT CLASS DESC	PRODUCT CLASS DESC	PRODUCT CLASS DESC					
Name	Measure	M1_1	M2_1	GM%_1	M1_2	M2_2	GM%_2	M1_3	M2_3
All Product Class Desc	Sales Value vs Sales Margin	1,229,782	543,020	44.16	1,048,094	459,248	43.82	1,020,458	434,227
BRANDED JUICE BOXES	Sales Value vs Sales Margin	182,083	46,125	25.33	124,385	27,904	22.43	113,027	22,644
BULK RETAIL JUICE	Sales Value vs Sales Margin	85,540	40,229	47.03	71,205	31,429	44.14	73,815	32,937
CDN BRANDED	Sales Value vs Sales Margin	23,902	8,462	35.40	43,974	14,631	33.27	25,653	8,662
CDN PRIVATE LABEL	Sales Value vs Sales Margin	300,677	103,967	34.58	212,294	72,189	34.00	235,852	75,091

PeriodProfile:

PRODUCT CLASS DESC	PRODUCT CLASS DESC	PRODUCT CLASS DESC	PRODUCT CLASS DESC	PRODUCT CLASS DESC	PRODUCT CLASS DESC	PRODUCT CLASS DESC				
Name	Year	Measure	1	2	3	4	5	6	7	8
All Product Class Desc	2010	Sales Value	1,229,782	1,048,094	1,020,458	840,701	481,884	763,058	986,556	775,984
All Product Class Desc	2010	Sales Margin	543,020	459,248	434,227	364,813	192,346	309,991	411,211	340,524
All Product Class Desc	2009	Sales Value	897,664	1,110,134	761,079	726,331	405,241	762,119	698,615	1,115,129
All Product Class Desc	2009	Sales Margin	458,703	577,639	361,580	360,187	160,971	341,193	298,500	532,245
All Product Class Desc	2008	Sales Value	754,730	713,535	690,024	595,881	368,953	396,316	506,615	486,161
All Product Class Desc	2008	Sales Margin	357,203	347,461	332,227	306,105	169,716	181,513	250,522	242,152

PeriodYearToDate:

PRODUCT CLASS DESC	PRODUCT CLASS DESC	PRODUCT CLASS DESC	PRODUCT CLASS DESC	PRODUCT CLASS DESC	PRODUCT CLASS DESC	PRODUCT CLASS DESC	PRODUCT CLASS DESC	PRODUCT CLASS DESC	PRODUCT CLASS DESC
Name	Sales_Value_CP10	Sales_Margin_CP10	GM%_CP10	Sales_Value_CP09	Sales_Margin_CP09	GM%_CP09	Sales_Value_YTD10	Sales_Margin_YTD10	
All Product Class Desc	1,740,746	739,336	42.47	1,381,048	629,943	45.61	12,657,025	5,312,094	
BRANDED JUICE BOXES	87,367	15,839	18.13	61,614	15,659	25.41	1,370,680	292,855	
BULK RETAIL JUICE	114,251	48,946	42.84	128,765	62,982	48.91	918,003	386,368	
CDN BRANDED	40,156	13,207	32.89	47,463	17,964	37.64	341,748	108,360	
CDN PRIVATE LABEL	418,165	152,150	36.39	400,784	143,763	35.87	2,915,625	1,009,294	

Close the CubeViewer 4 program without saving the settings to finish this section.

See also

[Getting Started](#)
[Understanding the Main CubeViewer 4 Screen](#)
[Navigating Down through the Data](#)
[Navigating Sideways Across the Data](#)
[Changing the Chart Formats](#)
[Exporting the Data and Charts](#)
[Saving and Opening Settings Files](#)
[Applying Filters](#)
[Changing Measures, Calculations and Timeframe](#)
[Cube Structure and Help](#)

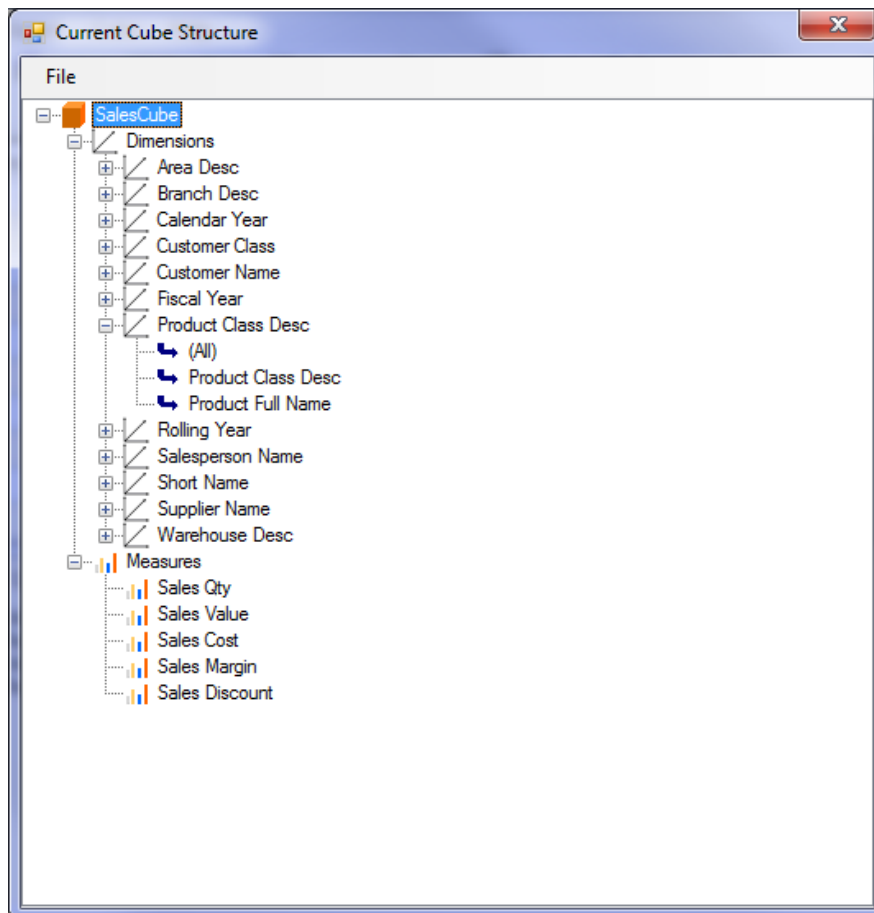
Home > Tutorial > Cube Structure and Help

Cube Structure and Help

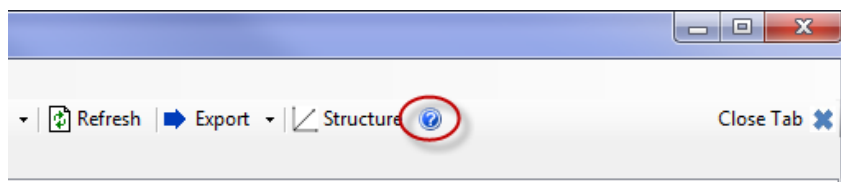
This section demonstrates how to view the structure of the current cube and how to access the online help.

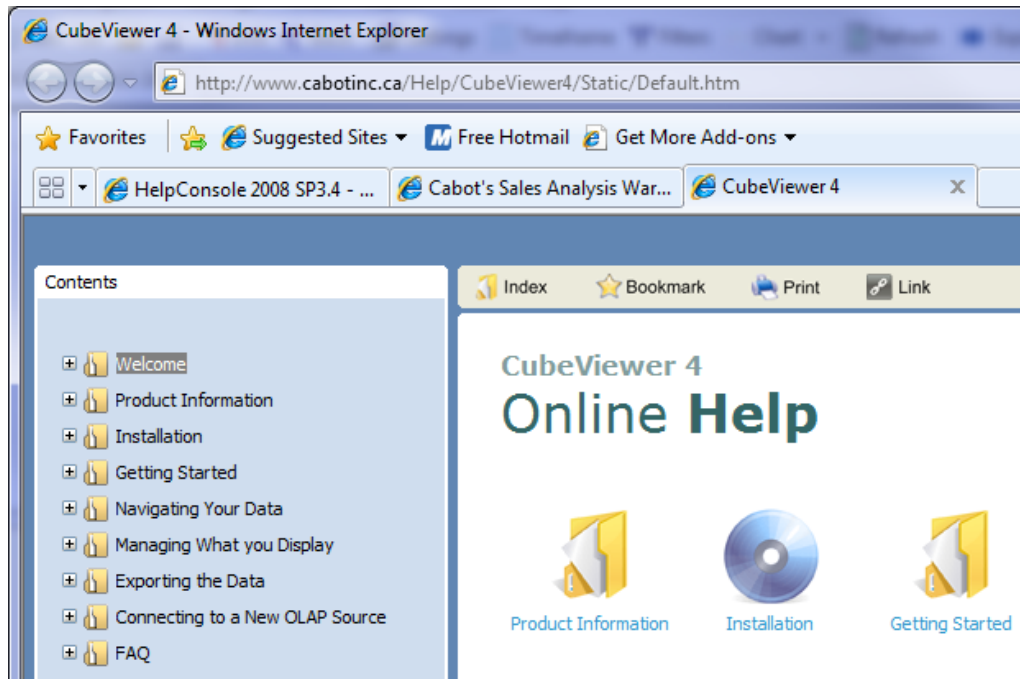
Open the CubeViewer 4 program by double clicking on the Tutorial settings file.

Click on the Structure toolbar button to show all the dimensions and measures in the current cube and expand the tree on a dimension to show the levels for that dimension.



Close the Structure window and click on the Help toolbar button (or Help -> Online Help main menu option) to display the online help.





Close the CubeViewer 4 program without saving the settings to finish this section and the tutorial.

Visit the [CubeViewer 4 Online Help](http://www.cabotinc.ca/Help/CubeViewer4/Static/Default.htm) for more information.

See also

- [Getting Started](#)
- [Understanding the Main CubeViewer 4 Screen](#)
- [Navigating Down through the Data](#)
- [Navigating Sideways Across the Data](#)
- [Changing the Chart Formats](#)
- [Exporting the Data and Charts](#)
- [Saving and Opening Settings Files](#)
- [Applying Filters](#)
- [Changing Measures, Calculations and Timeframe](#)
- [Changing the Display Style](#)

Index

CubeViewer 4 Tutorial